

CORE

TREVISO

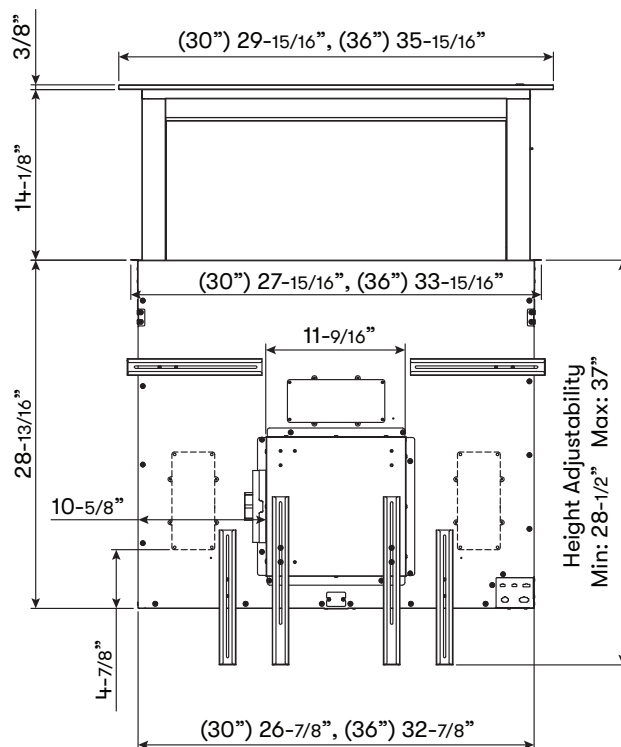
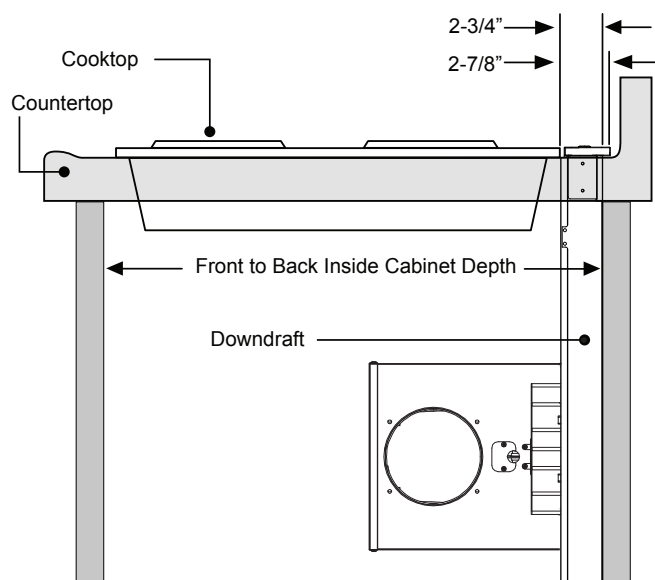
DOWNDRAFT

**ZEPHYR**

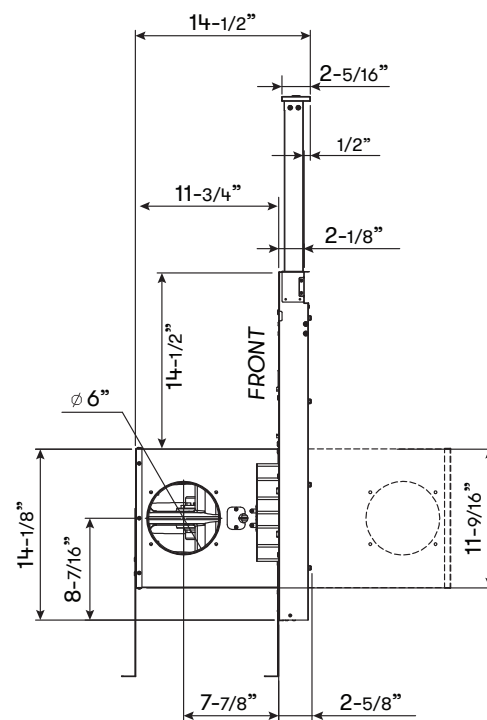
ZEPHYRONLINE.COM



#### CLEARANCE DIMENSIONS



FRONT



SIDE

## MODEL

Stainless Steel  
SizeZTV-E30AS  
30"ZTV-E36AS  
36"

## BLOWER PERFORMANCE

Blower CFM (Min. - Max.)

200 - 600

200 - 600

Sones (Min. - Max.)

2 - 6

2 - 6

ACT 390 CFM (Min. - Max.)

200 - 390

200 - 390

## FEATURES

ACT™ Technology

390

390

Controls

Mechanical Slide

Mechanical Slide

Speed Levels

3\*

3\*

Auto On/Off\*\*

Yes

Yes

Lighting

No

No

Filters

Stainless Steel Mesh x2

Stainless Steel Mesh x2

14" Chimney Rise

Yes

Yes

Reversible Blower Housing\*\*\*

Yes

Yes

3-Way Ducting

Yes

Yes

Recirculating Option

Yes

Yes

## DUCT SPECIFICATIONS

Left/Right Ducting

6" Round

6" Round

Bottom Ducting

6" Round

6" Round

AC POWER

120V, 60Hz at Max. 3.2A

120V, 60Hz at Max. 3.2A

## OPTIONAL ACCESSORIES

Recirculating Kit

ZRC-00TV

ZRC-00TV

ADA-Compliant Up/Down Remote Control

DDA-0003

DDA-0003

Range Trim Kit

DDT-0130

DDT-0136

Make-Up Air Kit

MUA006A

MUA006A

## WARRANTY

2 years parts, 1 year labor

2 years parts, 1 year labor

## COOKING APPLIANCE CONFIGURATIONS

Accommodate multiple cooking appliance combinations thanks to the reversible blower housing.



Cooktop



Cooktop + Oven\*\*



Range Top



Range\*\*

\*When ACT™ is enabled the maximum speed levels will change. ACT 390 CFM = 2 speeds.

\*\*Automatically turns on or off when raising or lowering the chimney.

\*\*\*To achieve a cooktop + oven or range installation, the blower must be relocated to the back of the downdraft. The cabinet depth behind the downdraft must be a minimum of 12".

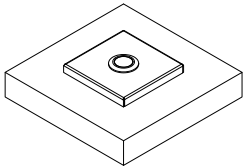
Specifications subject to change, check zephyronline.com for up-to-date information.  
Zephyr Ventilation | 2277 Harbor Bay Parkway, Alameda, CA 94502 | 888.880.VENT

JAN25.0101

## OPTIONAL ACCESSORY

## DESCRIPTION

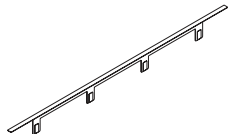
Model DDA-0003

**ADA-Compliant Wired Up/Down  
Remote Control**

Use when you cannot reach the UP/DOWN button on the downdraft chimney.

Can be located on counter top, face of cabinetry or on the side cabinet of an island.

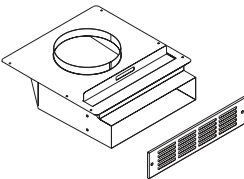
Cannot be used where remote control will interfere with cooking, where hot pans could be set, or where hot liquids could be spilled on the control.

Models  
DDT-0130, DDT-0136**Range Trim Kit**

Use with free-standing range - where a gap is present between back of range and downdraft

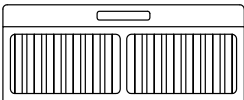
30", 36" widths

Model ZRC-00TV

**Non-Duct Recirculating Kit**

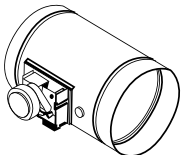
Use where ducting is not feasible or available. Mount to toe kick or base of a cabinet and attach directly to the blower using 6" round duct. Kit can be rotated so that the exhaust is not directly at your feet. Includes recirculating filter and decorative cover plate.

Model Z0F-C006

**Replacement Charcoal Filter**

Smoke and odors pass through charcoal filters allowing purified air to be reintroduced into the kitchen.

Model MUA006A

**Make-Up Air Kit**

When range hoods exhaust air out of your home, negative air pressure is created unless the exhausted air is replaced by fresh outdoor air.

Zephyr's Make-Up Air Damper is designed to balance the air pressure in your home by automatically opening to allow fresh air in while the range hood is operating.