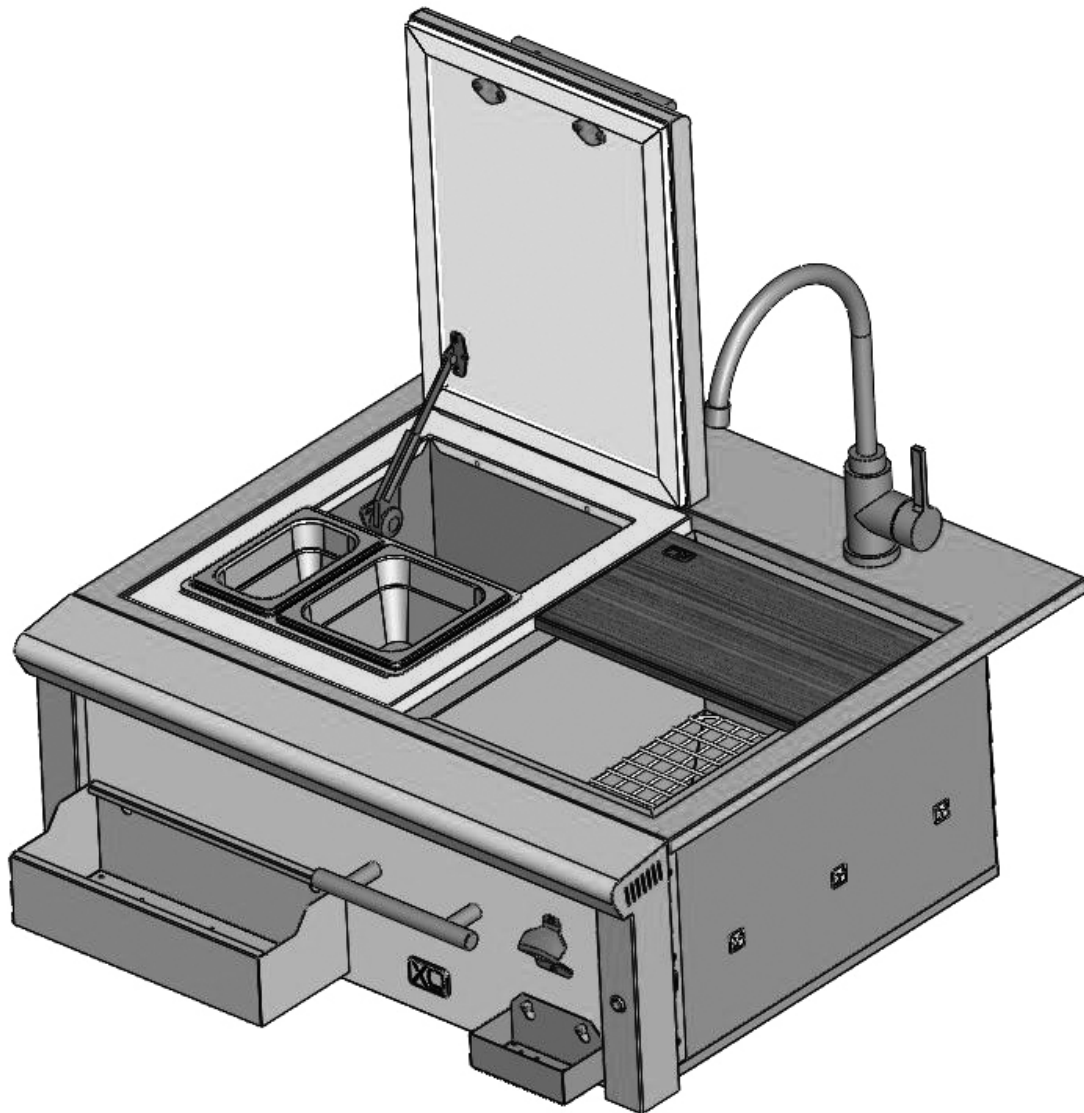


# EVERYTHING YOU NEED TO KNOW ABOUT YOUR



Professional "BAR PRO"



## BARTENDER STATION CARE & USE / INSTALLATION

RESIDENTIAL USE ONLY

I worked really hard  
on this manual -  
so please read it...



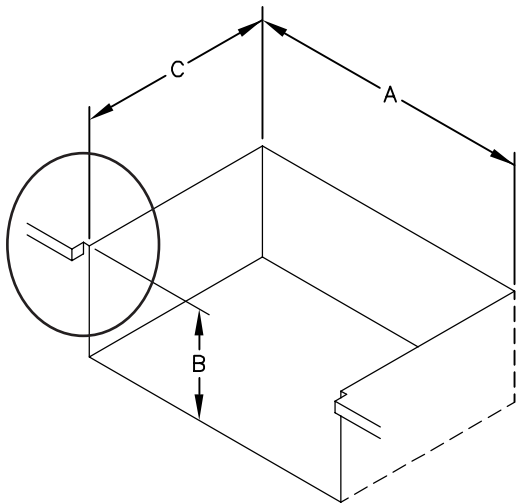
# EXTERIOR DIMENSIONS

**INSTALLER:** Read these instructions carefully before starting installation. Please leave these instructions with the homeowner.

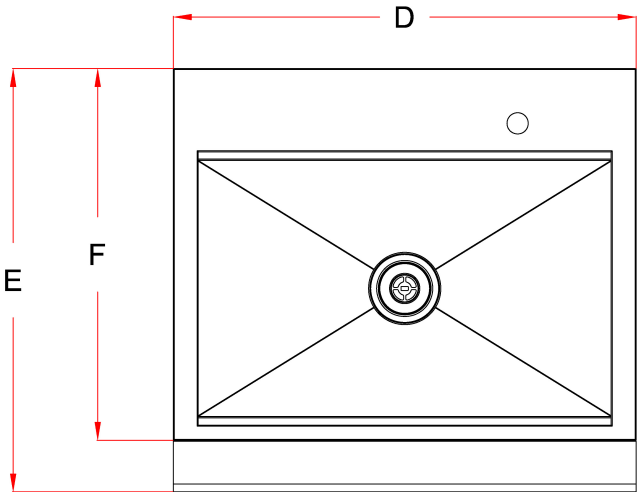
**HOMEOWNER:** Please retain these instructions for future use

	Cutout Dimensions			Exterior Dimensions		
Cut-out Dimension Specifications	Width A	Height B	Depth C	Width D	Depth E	Depth F
XOG30BARPRO	30 3/8"	27 3/4"	24 3/8"	30"	27 7/16"	24 1/8"

Counter top notch detail: a 1/2" width is required with a depth equal to the counter top overhang.



Cutout Dimensions



Exterior Dimensions

# INSTALLATION PREPARATION

The XO sinks are designed for outdoor use only. The sink should be installed by a qualified liscensed technician in accordance with all local plumbing and building codes.

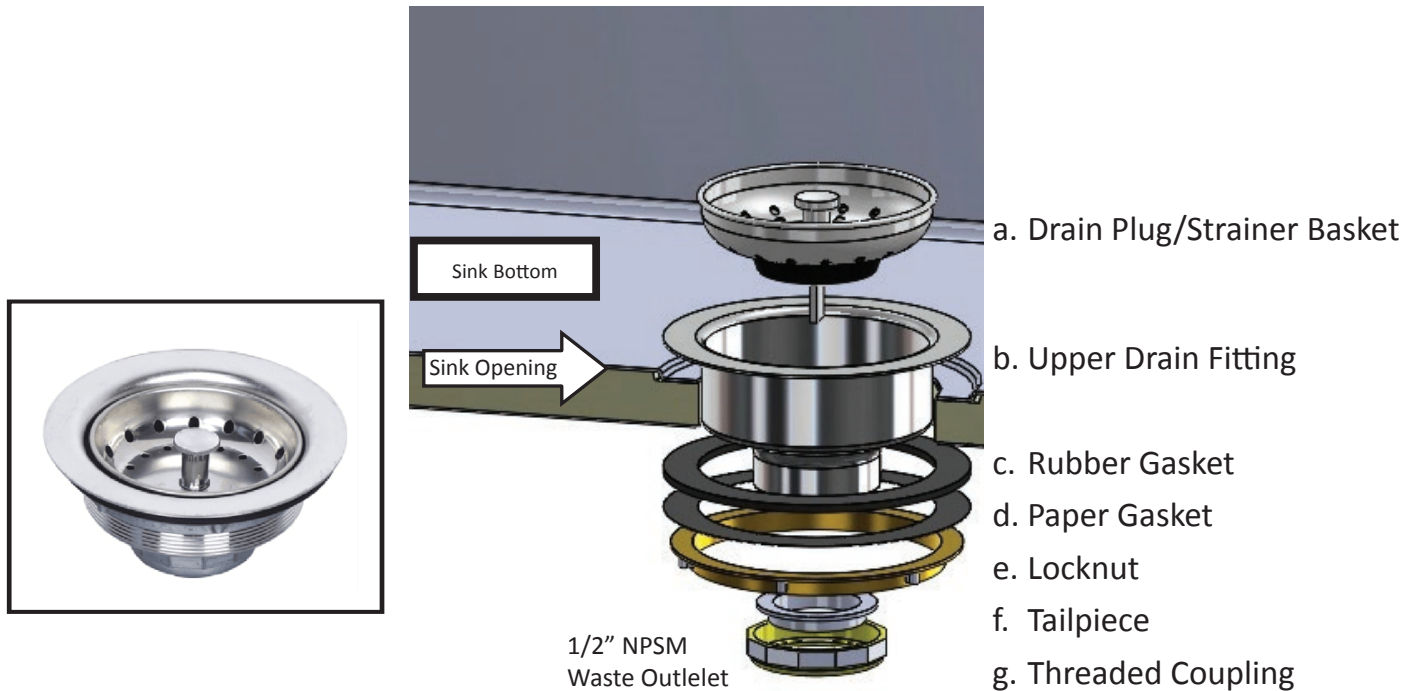
Prepare the counter top by cutting the appropriate cutout dimensions There must be a minimum of a 1/2" overlap on the sides and rear of the sink on the counter top to support the sink. Note: clearances below the sink must be maintained for maintenance, water, and drain lines.

# INSTALLING THE DRAIN ASSEMBLY

## INSTALLING THE DRAIN ASSEMBLY

For ease of installation we recommend that the drain assembly be installed before installing the sink into the counter top.

1. Remove the drain assembly from the box and identify the following parts:

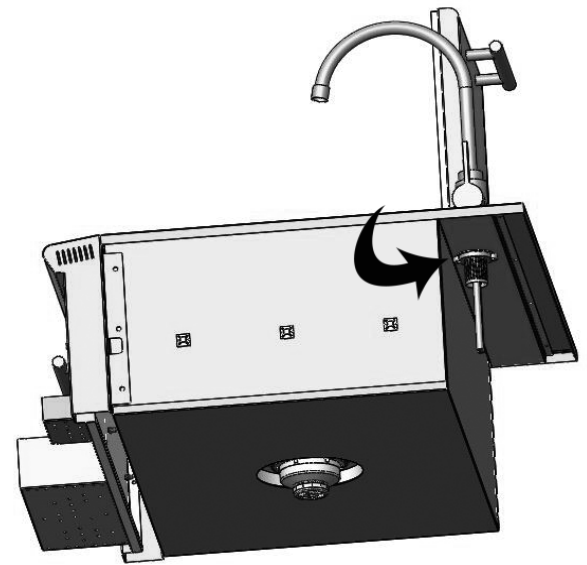
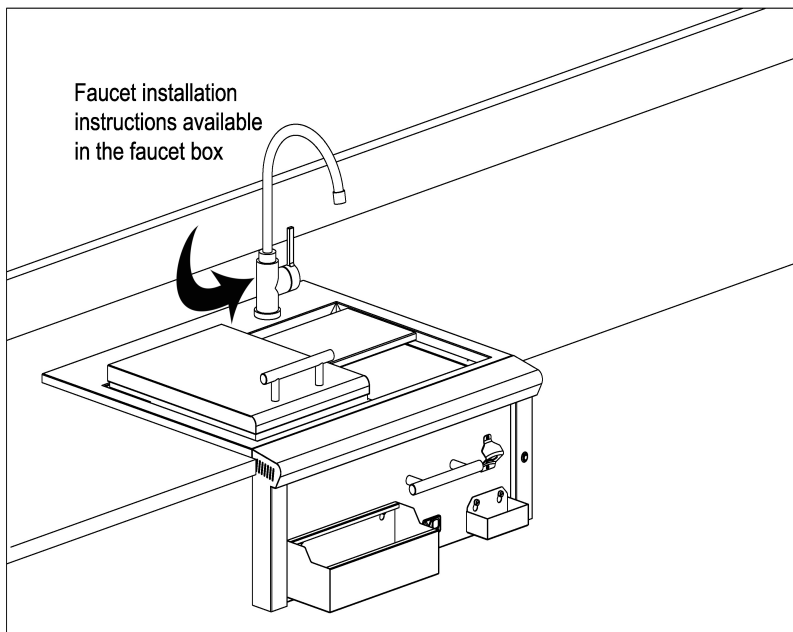


2. Remove the drain plug strainer basket (a) and separate the upper drain fitting (b) from the remainder of the drain assembly.
3. Place a bead of Plumbers Putty\* around the underside lip of the upper drain fitting. Drop the upper drain fitting (b) into the sink bottom opening and press it firmly into place. From the bottom of the sink position the rubber gasket (c) and then the paper gasket (d) on the upper drain fitting (b). The paper gasket (d) is used to prevent kinking of the rubber gasket (c) while tightening the locknut (e).
4. Align the drain assembly so that it sits centered in the sink drain cut-out. Screw the locknut (e) on to the upper drain fitting (b) threaded connection until it is **hand tight**. Now use a tool to tighten the locknut (e) another quarter turn.
5. Remove any excess Plumber Putty with a damp cloth.

\* Plumbers Putty is available at most home improvement centers. Plumbers putty is an easy-to-mold setting compound for use with stainless steel sealing applications. **Do Not Omit This Step.**

## INSTALLING THE XO SINK

1. Install the faucet into the top faucet opening on right back of the sink.
2. Carefully place the sink into the cut out on the counter top. Push the sink back until there are no gaps in the back and the bull nose contacts the front face of the cabinet. The sink will be supported by its weight on both sides and back lip.
3. If needed a small bead of silicone sealant could be put around the edges of the sink to prevent water seepage into the spaces below the sink.



## INSTALLING THE DRAIN PIPING (NOT INCLUDED)

Assemble all drain pipe connections to the tailpiece and on through a pipe trap and proper drainage. The drain must be installed in accordance with all local codes. In the absence of local codes, the requirements of the Uniform Plumbing Code should be followed.

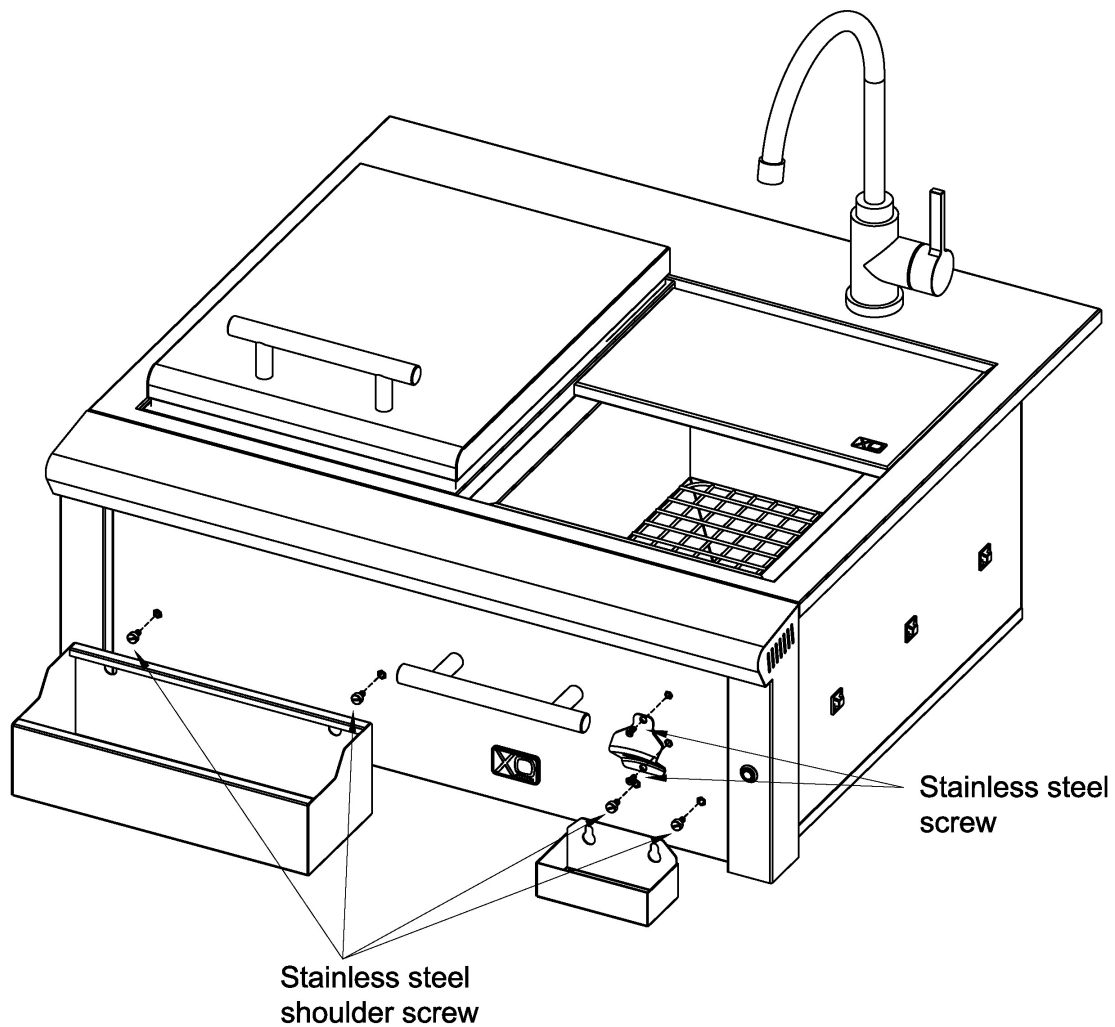
## INSTALLING THE LED LIGHT TRANSFORMER

The power supply transformer should be installed below the sink within the cabinet enclosure. Select a location where the transformer is protected against water, heat and physical damage. It is recommended that fasteners are used in at least two of the four mounting holes for secure attachment.

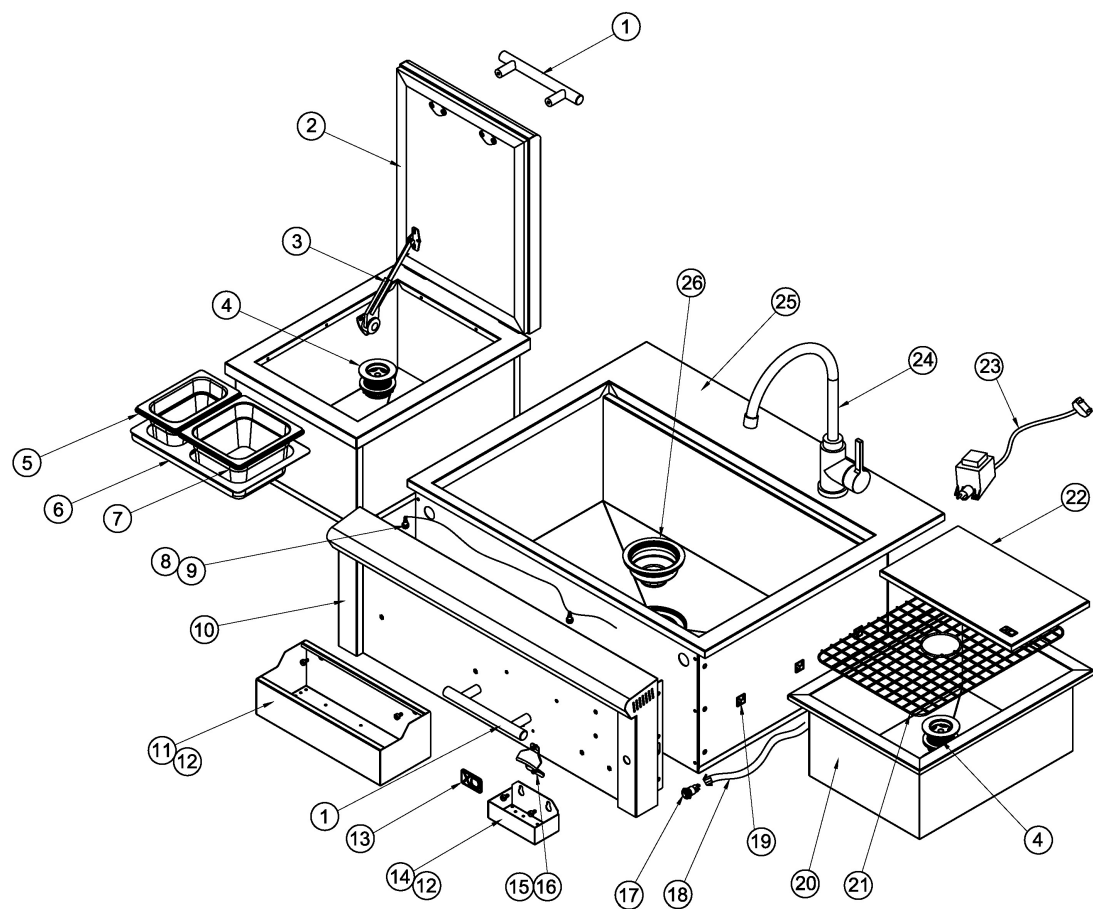
The power supply transformer must be plugged into a properly grounded GFI equipped outlet, installed by a qualified technician. The outlet of the transformer is plugged into the connector at the rear of the sink. Please see the electrical diagram provided in this manual.

## INSTALLING THE XO FRONT COMPONENTS

1. Located the supplied hardware bag
2. Install the two stainless steel shoulder screws into the right hand side inserts of the front panel.
3. Carefully lower the bottle holder on the newly attached shoulder screws.
4. When installing the bottle opener you will need to install the third shoulder screw directly below the far left insert. Attach the top of the bottle holder when you install the towel bar, as they share the screw.
5. Continue to install the towel bar using the second stainless steel phillips head screw provided.



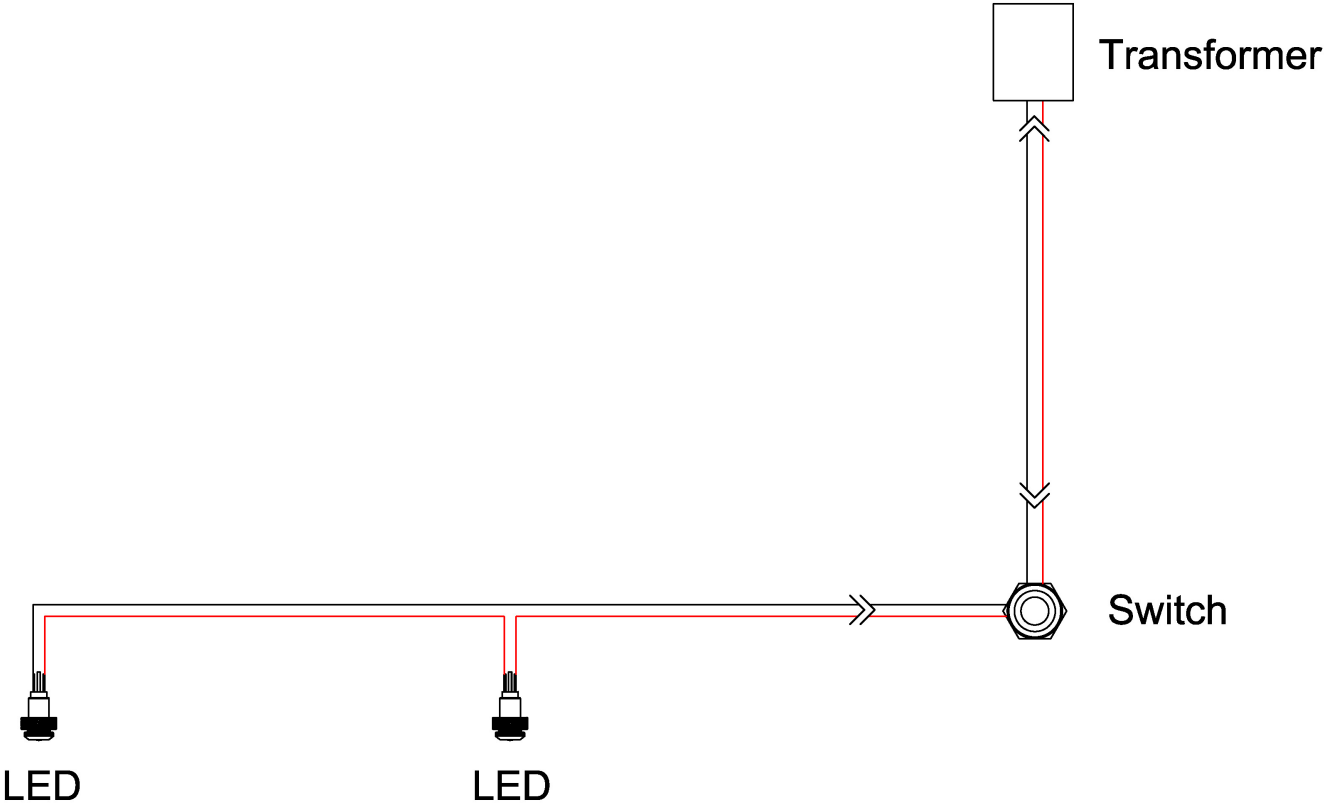
# EXPLODED VIEW/PARTS



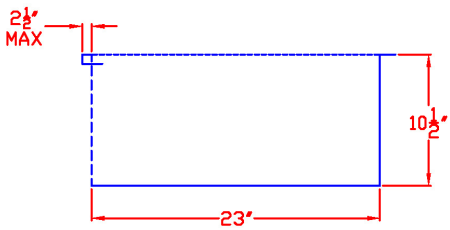
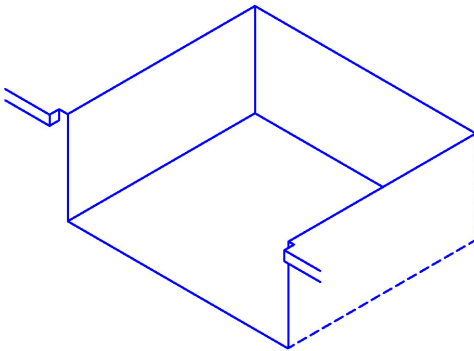
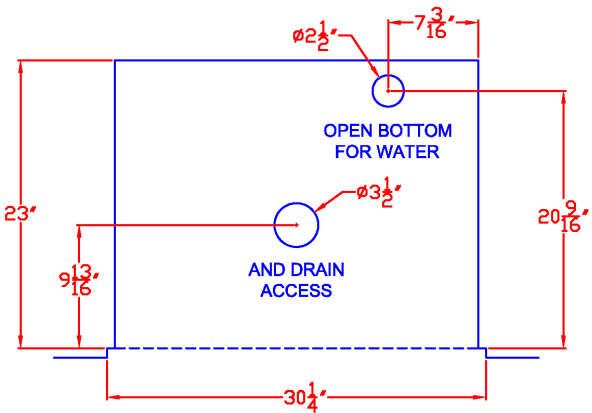
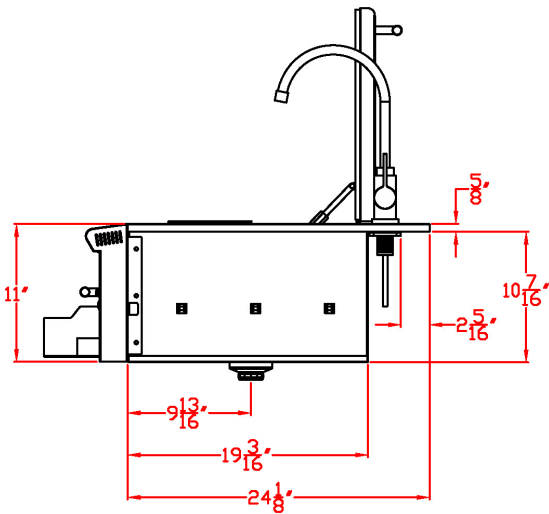
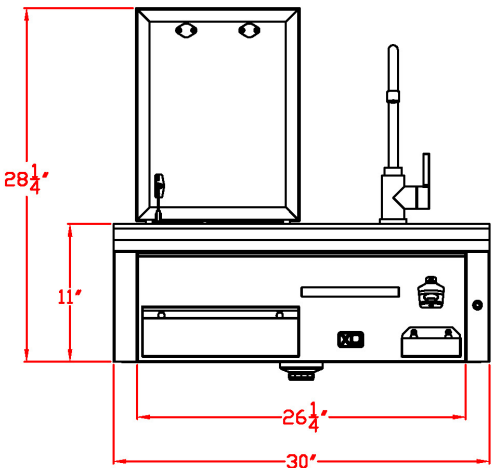
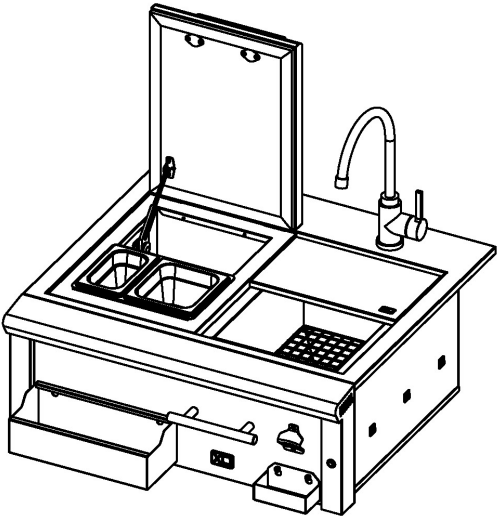
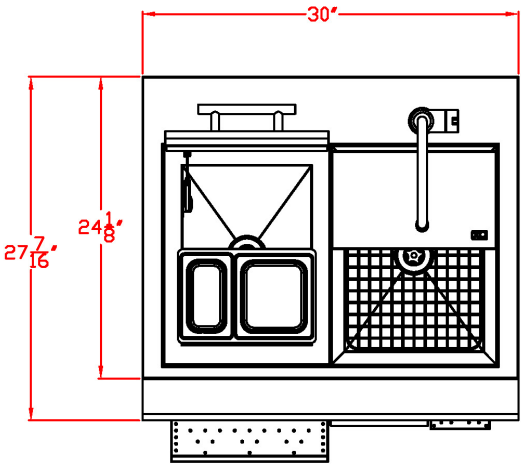
XOG30BARPRO

ITEM	PART NO.	DESCRIPTION	QTY
1		HANDLE	2
2		ICE COOLER LID	1
3		PISTON	1
4		SMALL SINK DRAINER	2
5		SMALL PC GASTRONOM PANS	1
6		GASTRONOM PANS BRACKET	1
7		BIG PC GASTRONOM PANS	1
8		LED LIGHT	2
9		LED WIRE	1
10		CONTROL PANEL	1
11		BOTTLE BOX, LARGE	1
12		BOTTLE BOX FIXING SCREW	4
13		BADGE	1
14		CAP CUP	1
15		BEER OPENER FIXING SCREW	2
16		BEER OPENER	1
17		SWITCH	1
18		MAIN POWER SUPPLY WIRE	1
19		MAIN POWER SUPPLY WIRE CLIP	3
20		SINK	1
21		FILTER SCREEN	1
22		CUR BOARD,BAMBOO	1
23		10W TRANSFORMER	1
24		FAUCET	1
25		SINK BODY, LARGE	1
26		BIG SINK DRAINER	1

LED LIGHT ELECTRICAL SCHEMATICS



PRODUCT DIMENSIONS/CUT OUT DIMENSIONS (IN BLUE)





# HOW TO ORDER REPAIR PARTS

## Parts Not Under Warranty

Parts can be ordered through XO directly.

## Warranty Parts

Warranty parts will need a proof of purchase and can be ordered by contacting XO appliances.. Proof of purchase is **required** for warranty parts.

All parts listed in the Parts List have a Part Number. When ordering parts, first obtain the Model Number and Serial Number from the name plate on your equipment. Then determine the Part Number and the Description of each part from the following illustration and part list. Be sure to give all this information . . .

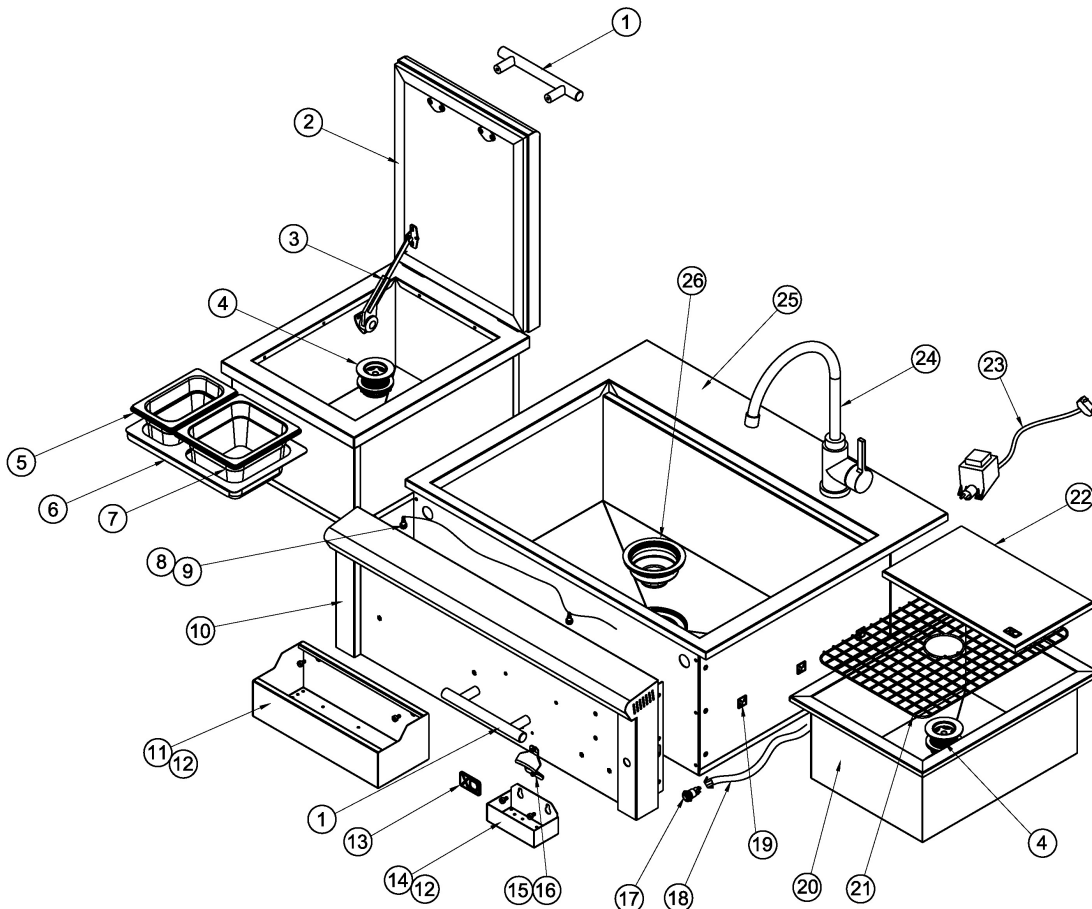
Appliance Model Number XOG30BARPRO Part Description \_\_\_\_\_

Appliance Serial Number \_\_\_\_\_ Part Number \_\_\_\_\_

Type of Gas (Propane or Natural) \_\_\_\_\_

Do not order bolts, screws, washers or nuts. They are standard hardware items and can be purchased at any local hardware store. Shipments contingent upon strikes, fires and all causes beyond our control.

Your XO Premium Gas Grill is identified by model number, serial number, and gas type. This information is provided on a product identification label located on the left side of the grill and under the grill's drip tray. For your convenience, complete this section for future reference when contacting XO Appliance.

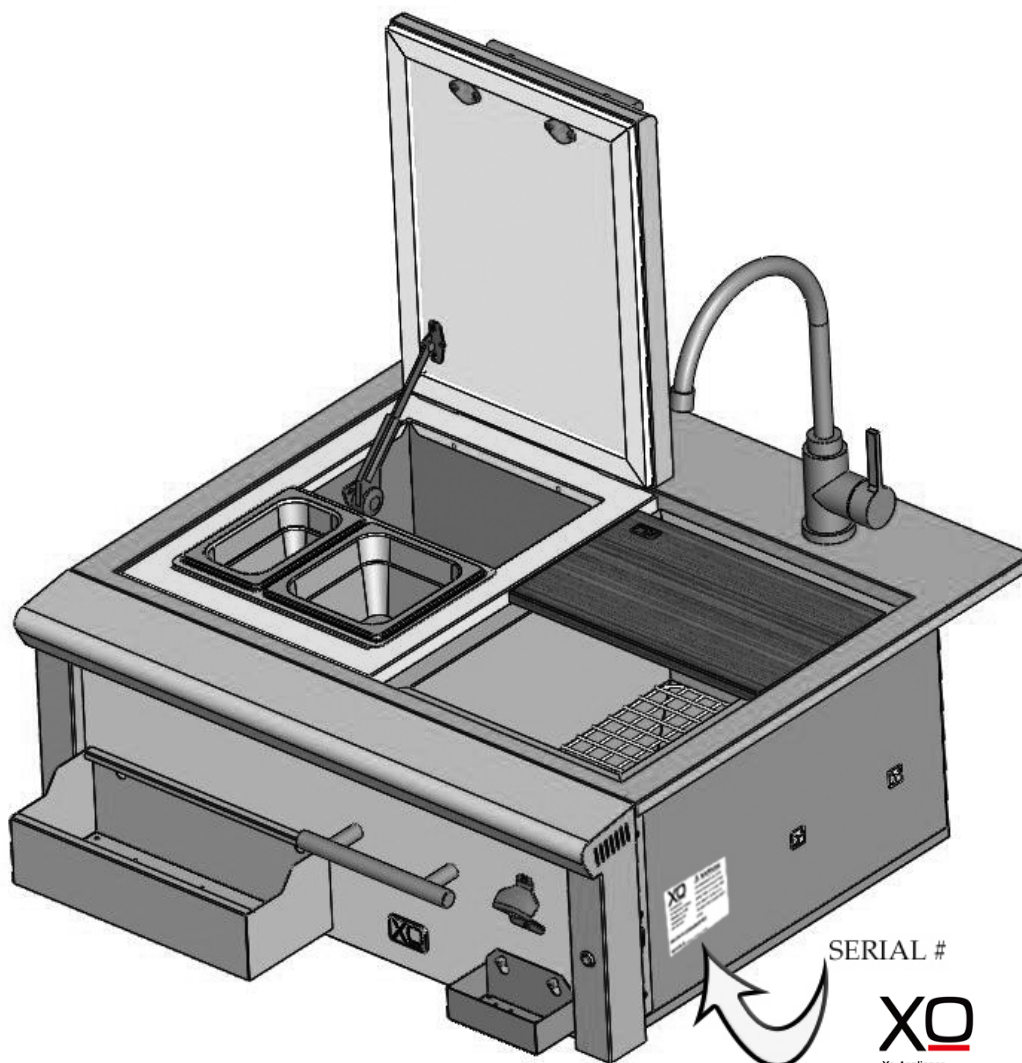


# CONTACTING XO APPLIANCE DIRECTLY

**Before contacting XO Appliance, please make sure you have the following information:**

- Model number
- Date of purchase
- Proof of purchase by the original owner
- Serial number

The serial number can be located on the rating plate which is located on the left side of the grill or on the pull-out drip tray lighting instructions and also on the underside of the drip tray.



SERIAL #

**XO**

Xo Appliance  
24 Eisenhower Parkway  
Roseland NJ 07068  
Xoappliance.com  
800 966 8300

**⚠ WARNING**

CA MAXIMUM FLOW RATE  
FOR KITCHEN FAUCET AND  
AREATORS AT 1.8 GALLONS  
PER MINUTE (GPM) AT 60  
POUNDS PER SQUARE INCH  
(PSI).

MODEL# XOG30BARPRO

SERIAL# \_\_\_\_\_

**TAKE A MINUTE TO CIRCLE YOUR MODEL ABOVE  
AND RECORD YOUR SERIAL NUMBER  
HERE IN CASE YOU NEED IT LATER**



# WE'VE GOT YOUR BACK

## XO Limited Warranty

### WARRANTY TERMS FOR XO - RESIDENTIAL USE ONLY.

#### XO Stainless Steel Gas Grills & Gas Burners

XO warrants this XO stainless steel gas grill to be free from defects at the time of purchase and for the periods specified below. The grill must be installed by a qualified technician and must be maintained and operated safely, in accordance with the instructions in the owner's manual. This warranty applies to the original purchaser only and is not transferable. All warranty repairs must be accomplished by a qualified gas appliance technician.

#### Limited Lifetime Warranty

XO warrants the stainless steel cast main burners and fabricated stainless steel housing, to be free from defects in materials and workmanship under normal residential use for the lifetime of the product. This warranty excludes discoloration, surface scratches, weather and atmospheric related staining, and minor surface rust and oxidation which are normal conditions and are to be expected with any outdoor product. The actual part will be repaired or replaced, free of charge, with the owner paying for all other costs including labor, shipping and handling.

#### FIVE YEAR LIMITED WARRANTY

XO warrants the briquette trays, stainless steel grates, drip pans and gas valves to be free from defects in materials and workmanship under normal residential use for a period of five years from the original date of purchase. The actual part will be repaired or replaced, free of charge, with the owner paying for all other costs including labor, installation, shipping and handling charges.

#### TWO YEAR LIMITED WARRANTY

XO warrants all other grill components to be free from defects in materials and workmanship under normal residential use for a period of two years from the original date of purchase. The actual part will be repaired or replaced, free of charge, with the owner paying for all other costs including labor, installation, shipping and handling charges.

#### COMMON AREA WARRANTY

A 180 day warranty applies to applications where use of the product extends beyond normal residential use such as bed and breakfast inn, private clubs, multidwelling condos and apartments. The actual part will be repaired or replaced, free of charge, with the owner paying for all other costs including labor, installation, shipping and handling charges. This warranty excludes all commercial locations such as restaurants and food service locations.

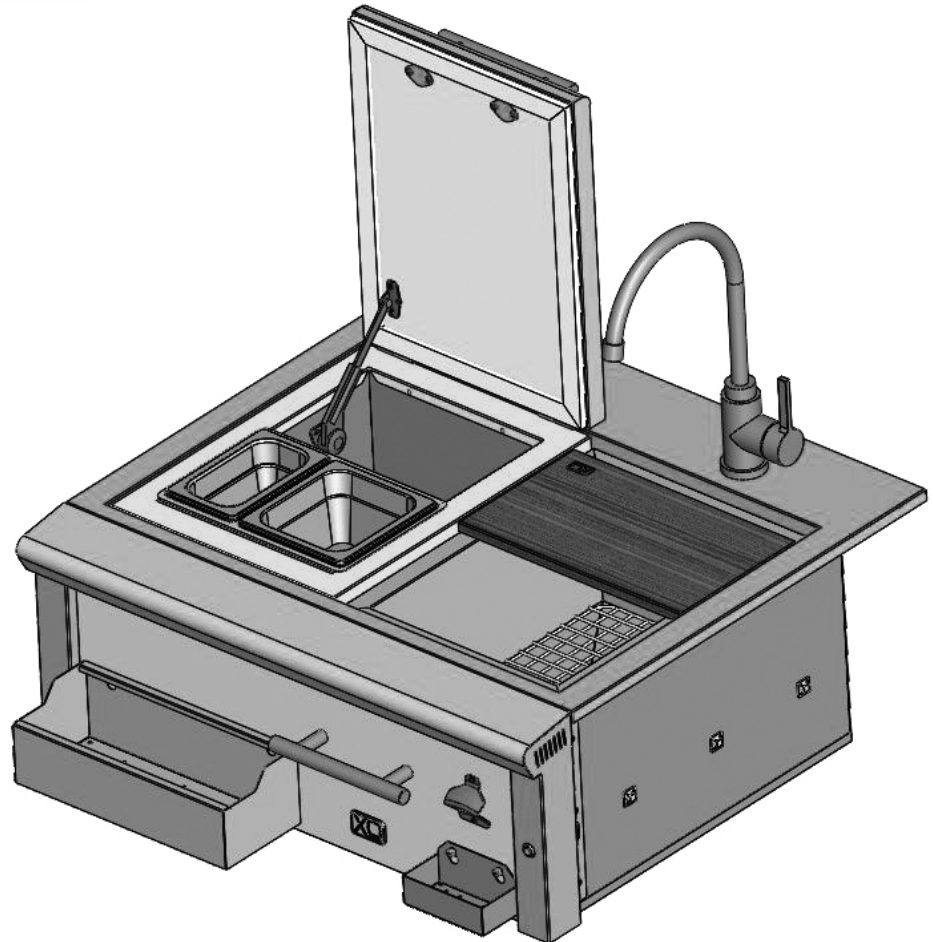
#### WARRANTY LIMITATIONS & EXCLUSIONS

This warranty shall apply only to the products purchased and located in the continental United States and Canada. The warranty coverage begins on the original date of purchase and proof of date of purchase is required. In order to activate the warranty, we require that you register your product online at [www.xoappliance.com](http://www.xoappliance.com) within 90 days of purchase. This warranty applies only to the original owner and may not be transferred. This warranty does not apply to damages resulting from negligence, alteration, misuse, abuse, accident, natural disaster, loss of electrical power to the product for any reason, improper installation or improper operation, unauthorized adjustments or calibrations, dings, dents, scratches, or damages due to harsh cleaning chemicals. This warranty does not apply to commercial use, or to products with altered or removed serial numbers. XO shall not be liable for incidental, consequential, special or contingent damages resulting from its breach of this written warranty or any implied warranty.

**FOR WARRANTY SERVICE & REPLACEMENT PARTS: check the contact & support section of our website [xoappliance.com](http://xoappliance.com), email us at [service@xoappliance.com](mailto:service@xoappliance.com) or call**

**1-800-966-8300**

**24 Eisenhower Parkway, Roseland, NJ 07068**



**NOW  
WE ARE COOKING**

XOG30BARPRO



1-800-966-8300

Visit our web site at [www.xoappliance.com](http://www.xoappliance.com)