

NAPOLEON

CHARCOAL SERIES

LOW, SLOW, OR SEAR.
CHARCOAL RE-INVENTED.





GRILL, CHILL AND SMOKE

- ✓ **YOU VIEW PERFECT GRILL MARKS AS A BADGE OF HONOR.**
- ✓ **YOU THINK CUTTING INTO A STEAK TO CHECK DONENESS IS SACRILEGE.**
- ✓ **YOU KNOW WHEN AND WHY TO USE RUB VS. MARINADE VS. SAUCE.**

That's why you are ready for a Napoleon grill. Napoleon takes the art of grilling to a higher level. Every feature, every material is engineered to give ultimate performance, so you can create unforgettable meals and memorable moments. And just like you, we're not some rookie behind the grill. Napoleon is a family-owned company with over 20 passionate years of grill-making experience. Every great meal starts with the best ingredients. Start yours with the best grill out there: Napoleon.

TABLE OF CONTENTS

Charcoal Professional PRO605CSS	4
PRO Charcoal Cart PRO22K-CART-3.....	5
PRO Charcoal Leg PRO22K-LEG-3	6
PRO Charcoal Leg PRO18K-LEG-3	7
Charcoal Kettle NK22K-LEG-3.....	8
Charcoal Kettle NK18K-LEG-3.....	9
14" Portable Charcoal Grill NK14K-LEG-3.....	10
Accessories	11
Specifications Chart	13



Rear **Charcoal Rotisserie** Burner



Easy Fueling Charcoal Access Door



Adjustable Charcoal Bed



Superior Temperature Control with Adjustable Air Vents

CHARCOAL PROFESSIONAL PR0605CSS

Total Cooking Area: 850 in² (5484 cm²)



- Space saving, stainless steel **LIFT EASE™** roll top lid features the **ACCU-PROBE™** temperature gauge
- Integrated tool hooks
- Two charcoal dividers
- Air vents control the rate of burn for your choice of high intensity heat, slow roasting, or smoking
- Chrome plated handles
- Solid stainless steel construction
- Exclusive rear charcoal rotisserie burner
- Easy front loading charcoal access door for refueling and easy cleaning
- Adjustable charcoal bed for multi-level heat control



ACCU-PROBE™ TEMPERATURE GAUGE

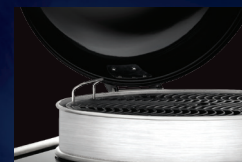
Safely and instantly read the internal temperature of your grill with the lid closed. This thermometer has a wide temperature measurement range from 0° to 370°C (0° to 700°F) and includes the ideal smoking and searing range



CHARCOAL



**Wind & Rain
Resistant** Smoke
Stack Chimney



Hinged Lid for Easy
Operation



Rugged **Weather-
proof** Wheels



Extra Large Folding
Side Shelf with
Integrated Tool **Hooks**



Integrated Bottle Opener

PRO CHARCOAL CART

PR022K-CART-3

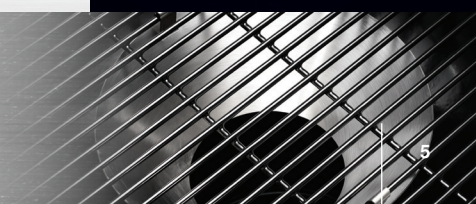
Total Cooking Area: 360 in² (2322 cm²)
Diameter: 22 in (55 cm)

- Sturdy cart design with modular lower panel storage
- Porcelain coated cast iron **Iconic WAVE™** cooking grids
- Hinged cooking grids with three height adjustments
- Vortex™ heat management
- **ACCU-PROBE™** temperature gauge
- Removable heavy steel ash catcher
- Stainless steel heat diffuser
- Stainless steel extension ring with rotisserie holder

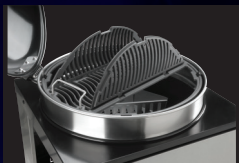


VORTEX™ HEAT MANAGEMENT

The conical Vortex™ Heat Management System improves convection within the grill for better searing and smoking as well as improved fuel efficiency while directing ash and embers into the ash bucket more effectively



CHARCOAL



Hinged Cooking
Grids with Three
Height Adjustments



Vortex™ Heat
Management



Removable Heavy
Steel Ash Catcher



**Wind & Rain
Resistant** Smoke
Stack Chimney



Stainless Steel
Extension Ring with
Rotisserie Holder

PRO CHARCOAL LEG

PR022K-LEG-3

Total Cooking Area: 360 in² (2322 cm²)
Diameter: 22 in (55 cm)

- Porcelain coated cast iron **Iconic WAVE™** cooking grids
- Hinged cooking grids with three height adjustments
- **ACCU-PROBE™** temperature gauge
- Vortex™ heat management
- Removable heavy steel ash catcher
- Stainless steel heat diffuser
- Stainless steel extension ring with rotisserie holder



RUGGED WEATHER-PROOF WHEELS

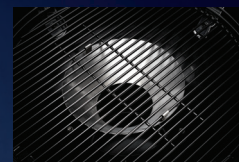
These wheels are tough and sturdy allowing you to easily move your charcoal grill to where the action is over any terrain



CHARCOAL



Hinged Cooking
Grids with Three
Height Adjustments



Vortex Heat
Management



Removable Heavy
Steel Ash Catcher



**Wind & Rain
Resistant** Smoke
Stack Chimney



Stainless Steel
Extension Ring with
Rotisserie Holder

PRO CHARCOAL LEG

PR018K-LEG-3

Total Cooking Area: 296 in² (1909 cm²)

Diameter: 18 in (45 cm)

- Porcelain coated cast iron **Iconic WAVE**™ cooking grids
- Hinged cooking grids with three height adjustments
- **ACCU-PROBE**™ temperature gauge
- Vortex™ heat management
- Removable heavy steel ash catcher
- Stainless steel heat diffuser
- Stainless steel extension ring with rotisserie holder



ADD SOME VERSATILITY AND COOKING SPACE

The optional kettle warming rack (71022), designed for all 22.5" diameter kettles. Napoleon's warming rack is the perfect accessory adding 60 sq. in. of extra cooking space. Use it to keep prepared food warm while still grilling or to quickly warm your buns and baked potatoes. It's also perfect for indirect cooking and baking on the grill, for that low and slow barbecue flavor



CHARCOAL



Advanced Air Venting



Stainless Steel, Hinged
Cooking Grid



Removable Heavy
Steel Ash Catcher



Integrated Tool
Hooks



4 Cast **Aluminum**
Leg Joints

CHARCOAL KETTLE

NK22K-LEG-3

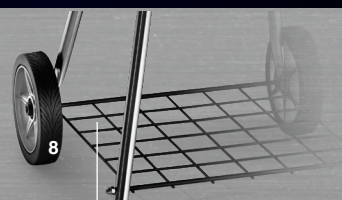
Total Cooking Area: 360 in² (2322 cm²)
Diameter: 22 in (57 cm)

- Stainless steel, hinged cooking grid
- Removable heavy steel ash catcher
- **ACCU-PROBE™** temperature gauge
- Built-in lid hanger
- Stainless steel air vents
- Cool touch handle
- Rugged weather-proof wheels
- Sturdy four legged design
- Easy to assemble



RUGGED WEATHER-PROOF WHEELS

These wheels are tough and sturdy allowing you to easily move your charcoal grill to where the action is over any terrain



CHARCOAL KETTLE

NK18K-LEG-3

Total Cooking Area: 296 in² (1909 cm²)
Diameter: 18 in (45.72 cm)

- Stainless steel, hinged cooking grid
- Removable heavy steel ash catcher
- ACCU-PROBE™ temperature gauge
- Built-in lid hanger
- Stainless steel air vents
- Cool touch handle
- Rugged weather-proof wheels
- Sturdy four legged design
- Easy to assemble



CHARCOAL



Advanced Air Venting



Stainless Steel,
Hinged Cooking Grid



Removable Heavy
Steel Ash Catcher



Integrated Tool
Hooks



4 Cast Aluminum
Leg Joints

RUST-FREE AIR VENTS

When charcoal grilling, being able to control heat through airflow is essential and easy to accomplish with adjustable vents at the top and bottom of the grill



CHARCOAL



Adjustable Air Vents

Provide Optimal Air Control



Steel Plated

Drip Pan



14" Chrome Plated

Cooking Grid



Locking Latches and
Easy Carry Handle



Cool Touch Handle

14" PORTABLE CHARCOAL GRILL

NK14K-LEG-3

Total Cooking Area: 150 in² (968 cm²)

Diameter: 14 in (44 cm)

- Dual-section charcoal baskets
- Adjustable air vents
- Steel plated drip pan
- Locking lid latches and easy carry handle
- Chrome plated cooking grid
- Porcelain-enameled lid and bowl
- Cool touch handle
- Sturdy four legged design
- Easy to assemble



WATER SMOKING

Remember when you're preparing a long weekend of smoking meat or fish that water smoking is a great way to bring up the heat and get a nice steam for perfect succulent results. Add a pan of apple cider or orange juice to really kick up the flavor

UPGRADE YOUR GRILLING ACCESSORIES



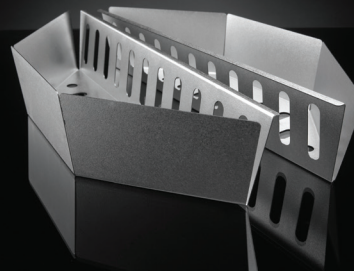
PREMIUM ROUND CHARCOAL STARTER

67802



CHARCOAL KETTLE TOOL HANGER

55100



CHARCOAL BASKETS

67400



CHARCOAL RAKE AND TONGS

67740



**22" CHARCOAL GRILL COVER
FOR CART MODEL**

(FITS PRO22K-CART-3)

61916



**22" CHARCOAL GRILL COVER
FOR LEG MODELS**

(FITS PRO22K-LEG-3 & NK22K-LEG-3)

61915



**18" CHARCAOL GRILL COVER
FOR LEG MODELS"**

(FITS PRO18K-LEG-3 & NK18K-LEG-3)

61914



PRO605 GRILL COVER

(FITS PRO605CSS)

61605



WARMING RACK FOR CHARCOAL KETTLE GRILLS

(FITS NK22K-LEG-3, PRO22K-LEG-3 & PRO22K-CART-3)
71022



APPLE WOOD CHIPS

67007



HEAVY DUTY ROTISSERIE KIT

69241



STAINLESS STEEL 2 PIECE TOOLSET

70033



PARING KNIFE

55215



CHEF'S KNIFE

55211



SANTOKU KNIFE

55212



CARVING KNIFE

55213



CAST IRON REVERSIBLE GRIDDLE

56083



CAST IRON DESSERT COOKER

56054



CAST IRON SAUCE PAN WITH LID

56051



CAST IRON FRYING PAN

56053

SPECIFICATIONS	PR0605CSS	PR022K-CART-3	PR022K-LEG-3	PR018K-LEG-3	NK22K-LEG-3	NK18K-LEG-3	NK14K-LEG-3
*Lid colour	ss	bk	bk	bk	bk	bk	bk
Vortex™ heat management system	-	S	S	S	S	S	-
ACCU-PROBE™ temperature gauge	S	S	S	S	S	S	-
Exclusive removable rear charcoal rotisserie burner	S	-	-	-	-	-	-
Cast iron Iconic WAVE™ cooking grids	S	S	S	S	-	-	-
Stainless steel cooking grids	-	-	-	-	S	S	-
Chrome plated cooking grids	-	-	-	-	-	-	S
Adjustable grid heights	-	S	S	S	S	S	-
EASY ROLL™ locking casters	S	S	-	-	-	-	-
Weather proof wheels	-	S	S	S	S	S	-
Folding side shelf	-	S	-	-	-	-	-
Built-in lid hanger	-	-	-	-	S	S	S
Ergonomic hinged lid	-	S	S	S	-	-	-
Cool touch handle	S	S	S	S	S	S	S
Removable heavy steel ash catcher	S	S	S	S	S	S	S
Steel plated ash pan	-	-	-	-	-	-	S
Stainless steel heat diffuser	-	S	S	S	S	S	-
Adjustable charcoal bed	S	-	-	-	-	-	-

SPECIFICATIONS (CONTINUED)	PR0605CSS	PR022K-CART-3	PR022K-LEG-3	PR018K-LEG-3	NK22K-LEG-3	NK18K-LEG-3	NK14K-LEG-3
Easy access doors	S	-	-	-	-	-	-
Adjustable air vents	S	S	S	S	S	S	S
Precision control air vents	S	S	S	S	S	S	-
Modular lower panel storage	-	S	-	-	-	-	-
ACCESSORIES	PR0605CSS	PR022K-CART-3	PR022K-LEG-3	PR018K-LEG-3	NK22K-LEG-3	NK18K-LEG-3	NK14K-LEG-3
Commercial quality rotisserie kit 4 forks	0	-	-	-	-	-	-
Heavy duty rotisserie kit	-	0	0	0	-	-	-
Warming rack	S	0	0	0	0	0	-
Charcoal starter	0	0	0	0	0	0	0
Toolset hanger	-	-	0	0	0	0	-
Charcoal baskets	-	S	0	0	0	0	S
Heavy duty cover	0	0	0	0	0	0	-
DIMENSIONS	PR0605CSS	PR022K-CART-3	PR022K-LEG-3	PR018K-LEG-3	NK22K-LEG-3	NK18K-LEG-3	NK14K-LEG-3
Total width in inches (cm)	67.5 (171)	46 (84)	23 (59)	21 (53)	23 (59)	21 (53)	14
Total depth in inches (cm)	24.75 (63)	29.5 (75)	28.5 (72)	25 (63)	28 (71)	24.5 (62)	14
Total height in inches (cm)	49.25 (59.25)	44 (111)	42 (107)	39.5 (100)	41 (104)	38.5 (97)	18
Total cooking area	850 in ²	360 in ²	360 in ²	296 in ²	360 in ²	296 in ²	150 in ²

S = standard 0 = optional *Lid Colours: ss = stainless steel, bk = black



NAPOLEON

CELEBRATING OVER 40 YEARS OF HOME COMFORT PRODUCTS



napoleon.com

24 Napoleon Road, Barrie, Ontario, L4M 0G8
103 Miller Drive, Crittenden, Kentucky, USA 41030
7200 Trans Canada Highway, Montreal, Quebec H4T 1A3

PHONE: 1-888-721-8324

Approved by Intertek Testing Services to standards in the USA and Canada: ANSI Z21.58 / CSA 1.6 - Outdoor Cooking Gas Appliances. All specifications and designs are subject to change without prior notice due to ongoing product improvements. Consult your owner's manual for complete installation and operating instructions and check all local and national Building Codes and Regulations. Not all features available on all models. Images and colors may not be exactly as shown. Napoleon is a trademark of Wolf Steel Group Inc. and is used under license.

Authorized Dealer



Printed in Canada
ADBRN2-CHAR (ADBRCFL) - 03/2024